

**이승희**

b. 1994, 일산 거주 및 활동  
leeseounghee.com / @end\_of\_summer

**학력**

2021 홍익대학교 일반대학원 동양화과 졸업  
2018 런던 예술대학교, 첼시컬리지 오브 아트 순수 미술 졸업

**개인전**

2025 Pieces of, 상하웅, 서울  
2023 End of Summer, 디스위켄드룸, 서울  
2021 신과 개의 마음, 문래예술공장, 서울  
2021 고양 아티스트 365, 고양아람누리, 고양  
2020 Blue eyes, 온수공간, 서울

**단체전**

2026 Land Ho!, 스윙, 서울  
2025 Velvet Hammers, 핼, 서울  
2025 사이 시공 생태계, 팀서화, KCS, 서울  
2024 모자만 아는 일, CALM & PUNK GALLERY, 도쿄, 일본  
2024 스모킹 건, 별관, 서울  
2023 미안해요, 프랑켄슈타인, 전북 도립 미술관, 완주  
2023 K90 - 99, K-Art as a convergence of Multi - culture,  
LUPO, 밀라노, 이탈리아

**Seounghee Lee**

b.1994, Lives and works in Ilsan  
leeseounghee.com / @end\_of\_summer

**Education**

2021 MFA, Oriental Painting, Hongik University  
2018 BFA, Fine Arts, University arts of London, Chelsea college of arts

**Solo Exhibitions**

2025 Pieces of, Sangheeut, Seoul  
2023 End of Summer, ThisWeekendRoom, Seoul  
2021 The mind of God and Dog, Mulle Art Space, Seoul  
2021 Goyang Artist 365, Goyang Aram nuri, Exhibition hall, Goyang  
2020 Blue eyes, Onsu-gongan, Seoul

**Group Exhibitions**

2026 Land Ho!, Sweep, Seoul, KR  
2025 Velvet Hamers, FIM, Seoul, KR  
2025 Ecosystem of In-between space time, TEAM.SEOHWA, Seoul, KR  
2024 Only the Hat Knows, CALM & PUNK GALLERY, Tokyo, Japan  
2024 Smoking Gun, OUT HOUSE, Seoul, KR  
2023 Sorry, Frankenstein, Jeonbuk Museum of Art, Wanju  
2023 K90 - 99, K-Art as a convergence of Multi - culture, LUPO, Milano,  
Italy

2023 동시대 이슈전 헬로! 펫, 또 하나의 가족,  
성남 큐브 미술관, 성남

2023 비록 보이지 않더라도, 대전창작센터, 대전

2022 Image tracking, 전시공간, 서울

2022 This Title Is Not Available In Your  
Region, GASP, 뉴욕, 미국

2020 Blue, 을지로 of, 서울

### **선정**

2021 서울문화재단 비넥스트 시각예술부문 (구  
유망 예술 지원)선정

2021 고양문화재단 고양우수작가 선정

### **소장**

X Museum, 베이징, 중국

2023 Contemporary issue – Hello! pet, Our family, Cube Art Museum,  
Seongnam

2023 Unseen, Daejeon creative center, Daejeon

2022 Image tracking, all time space, Seoul

2022 This Title Is Not Available In Your Region, GASP, Newyork, USA

2020 Blue, Euljiro – of, Seoul

### **Awards & Grants**

2021 BENXT—Visual Art, Seoul Cultural Foundation, Mullae Art Space

2021 Goyang Artist 365, Goyang Cultural Foundation

### **Public Collections**

X Museum, Beijing, CN



*Psshhh 1*, 2026, cast bronze, silver nitrate patina, pigment, wax nish, 2 elements: 20 × 8 × 10 cm; 40 × 67 × 34cm



Installation views, Seounghee Lee, "*Land Ho!*," 2026, Sweep, Seoul.





Installation views, Seounghee Lee, "*Land Ho!*," 2026, Sweep, Seoul.



*The Journey*, 2026, etching on copper plate, printed with ink on paper, framed with aluminum, 52 × 71 cm





*The Star Bowl*, 2026, Cast aluminum and cast bronze, pigment, wax finish, 6 x 20 x 20 cm



Installation views, Seounghee Lee, "*Land Ho!*," 2026, Sweep, Seoul.



*The True Love (The key)*, 2025, aluminum leaf on resin





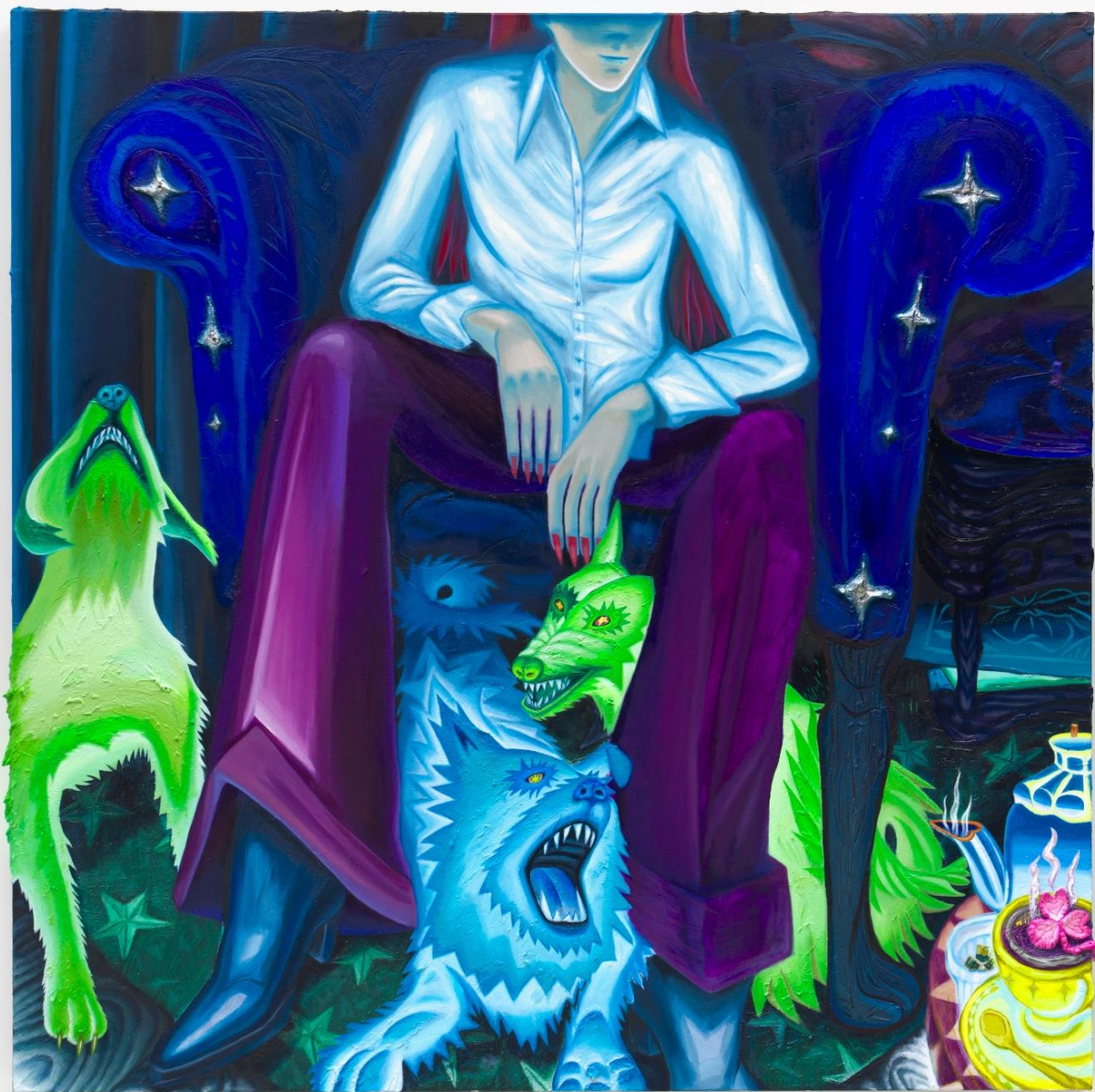
*The Series of Tools for Spiritual Practice, 2026, cast bronze, silver nitrate patina, wax polish and ink, 5 x 15 x 5 cm*



*The Royal Guardian.* (Brass. Ver), 2025, Etching on copper plate, ink on paper, hand-cast resin frame with brass powder and wax finish, and anti-reflective museum glass, 73 x 60 cm



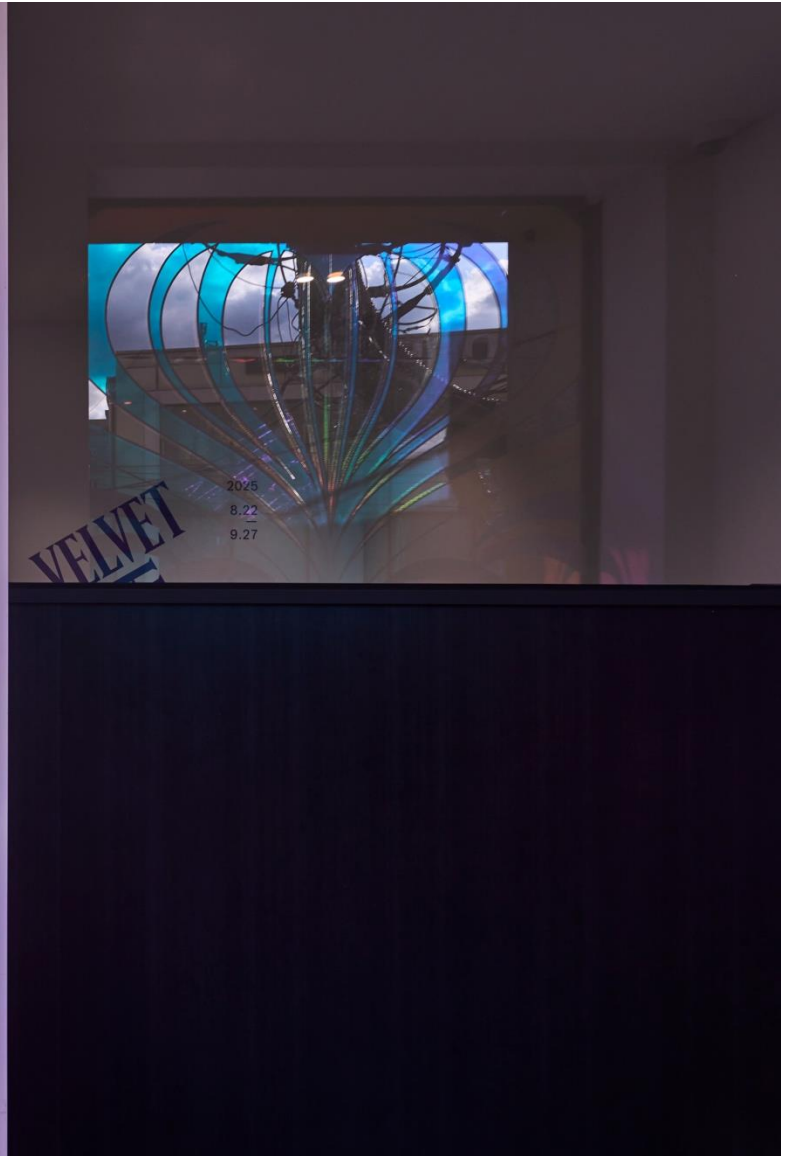
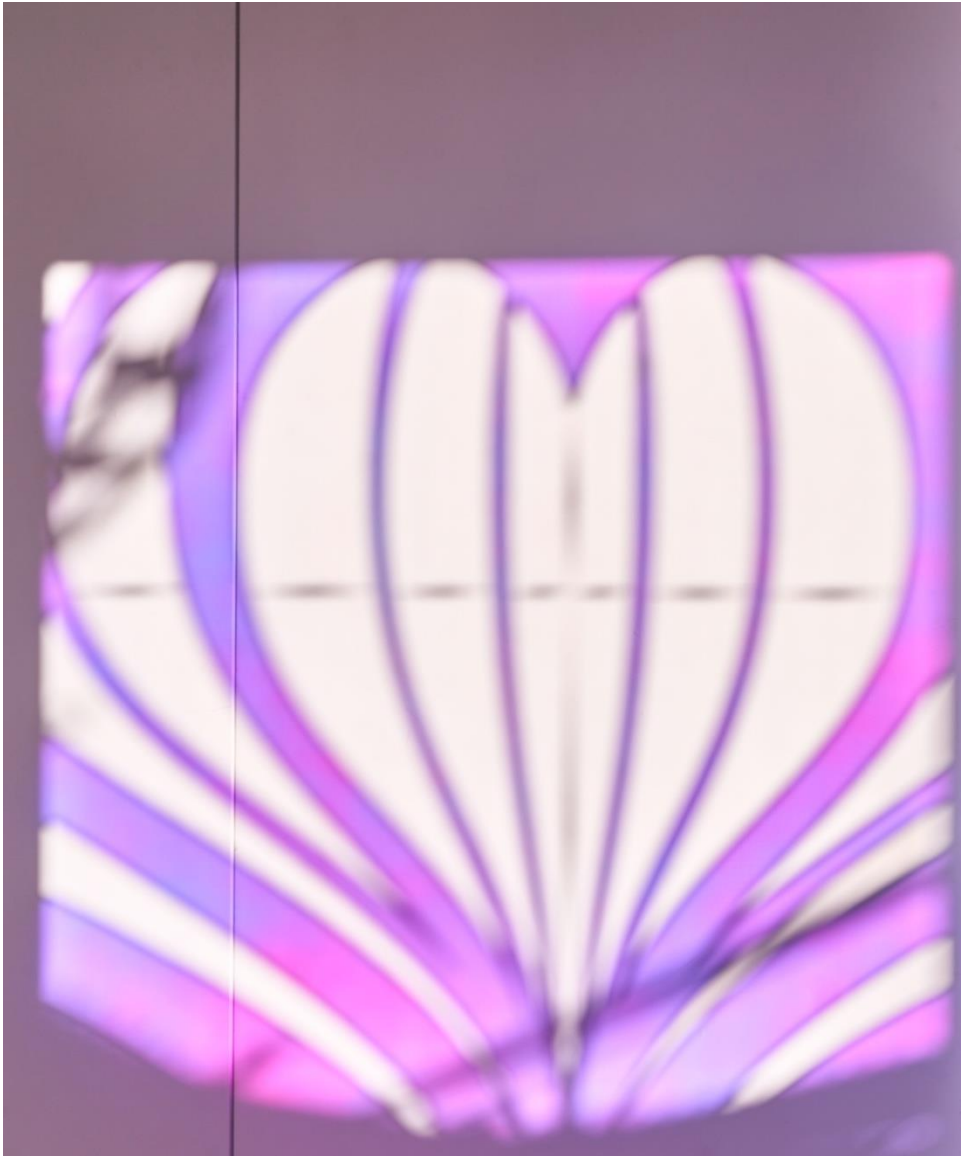
Installation views, Seunghee Lee, "*Velvet Hammers*," 2025. Fim, Seoul.



*She and She*, 2025, oil and acrylic on canvas, 130 x 130 cm



*Wiggle-Wag Window, The Wagging Tail Spell, 사랑 사랑 꼬리 주문, (Guardian Window Series), Graphic Design : Jeongmo Park*



Installation views, Seunghee Lee, "*Velvet Hammers*," 2025. Fim, Seoul.



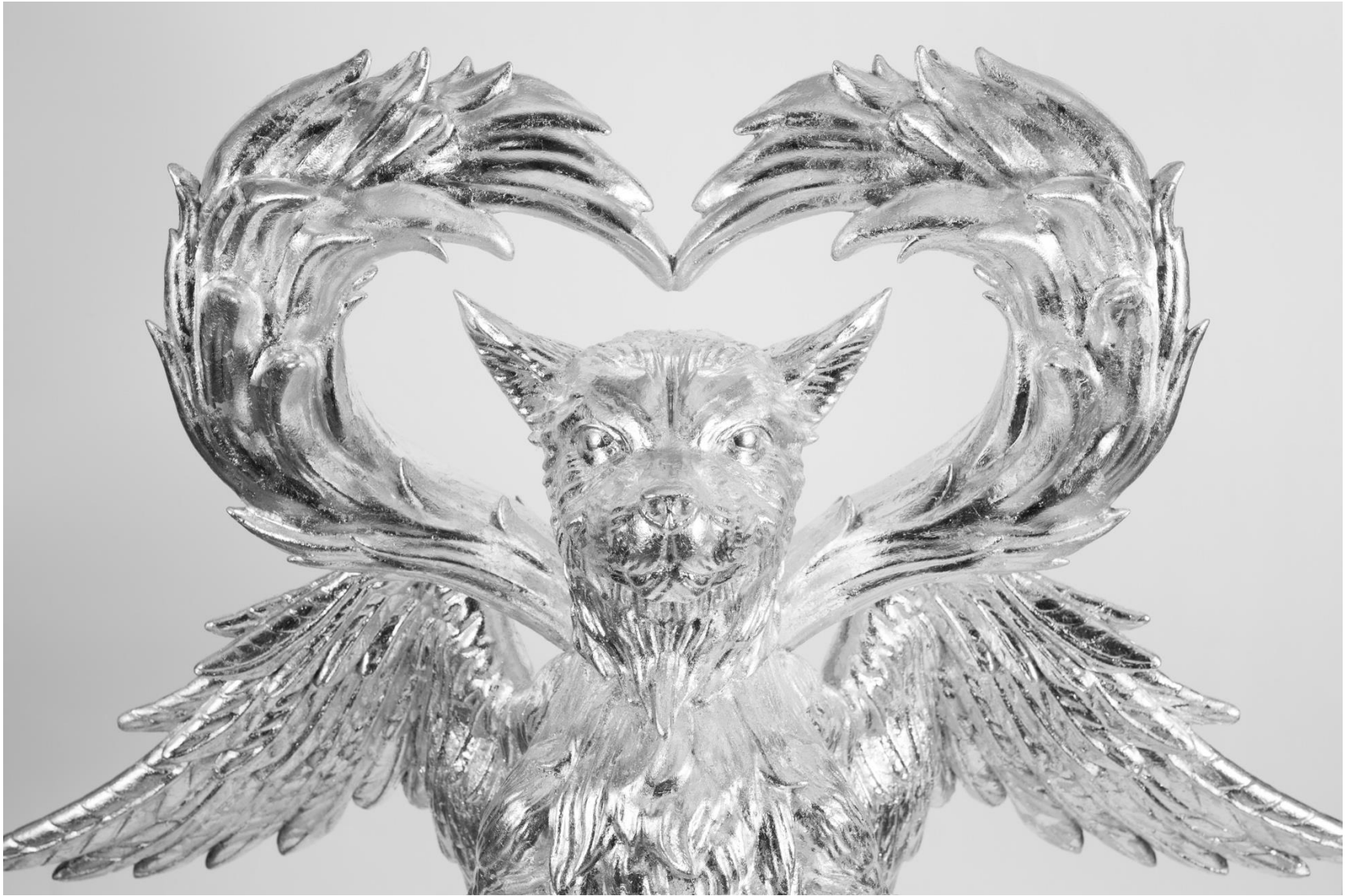


*The Magician (Tarot Card Series), 2025, acrylic on canvas, 73 x 60 cm*





*Liae's Desk*, 2025, oil and acrylic on canvas, 73 x 60 cm



*The Eternal Key*, 2025, aluminum leaf on resin, 105 x 50 x 160 (h) cm



Installation views, Seunghee Lee, "*Pieces of*," 2025. Sangheeut, Seoul.



*Doggie Coin 2 (The Beginning of the World)*, 2025, patinated bronze with wax finish. 30 x 3 x 30 (h) cm.

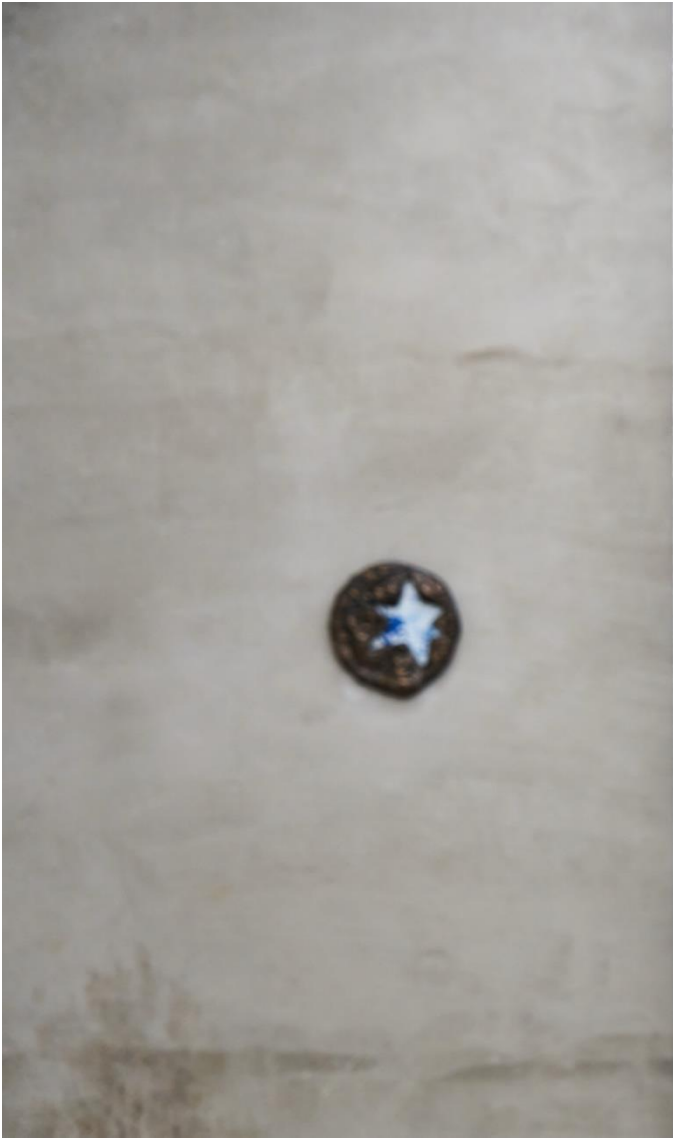


*Doggie Coin 3 (Forever)*, 2025, patinated bronze with wax finish. 30 x 3 x 30 (h) cm.



*Doggie Coin 2 (The Beginning of the World)*, 2025, patinated bronze with wax finish. 30 x 3 x 30 (h) cm.





*In Some Dream*, 2025, etching on copper plate, printed with ink on paper, framed with resin, chrome powder, and wax finish











나뭇가지위에 개새 (*Dog Bird on Branch*), 2024, acrylic epoxy on resin, 19 x 24 x 40cm(h)



*End of Summer, 2023, acrylic, acrylic medium, water based marker and pigment powder on canvas, 210 x 120, 210 x 240, 210 x 120 cm (From left)*







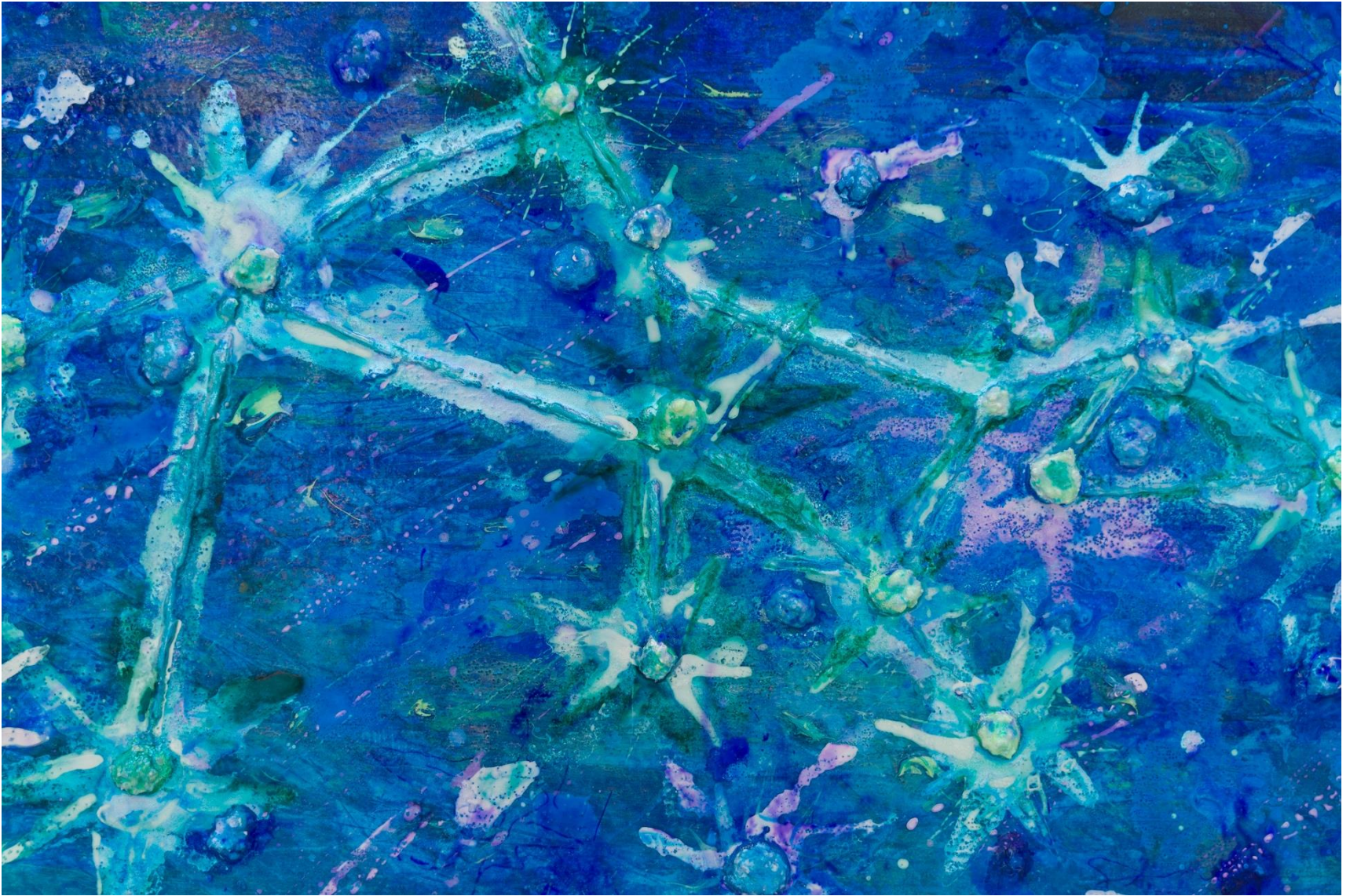




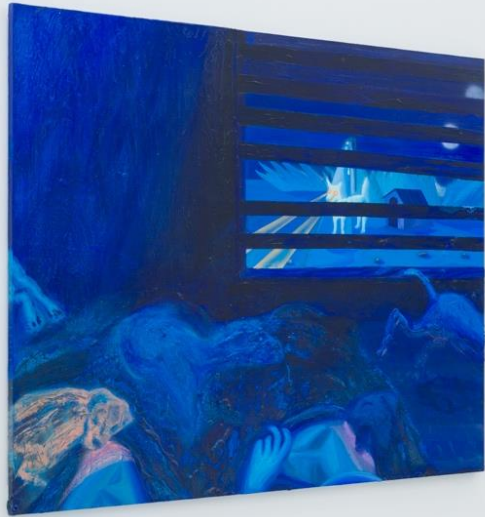
Installation views, Seunghee Lee, "*End of Summer*," 2023. This Weeknd Room, Seoul.



*Supreme*, 2023, acrylic, acrylic medium, water based marker and pigment powder on canvas, 91 x 72 cm



\* Dog star (Sirius, Orion's Dog)













야광 개구리 *Dogrog (Fluorescent)*, 2023, phosphorescent pigments and epoxy on resin



*The Series of Energetic Dosa, acrylic on resin, 2023*



*The Great Dog 2*, 2021, acrylic, gypsum, epoxy putty, aluminum panel and various material on styrofoam, 150 x 90 x 170cm

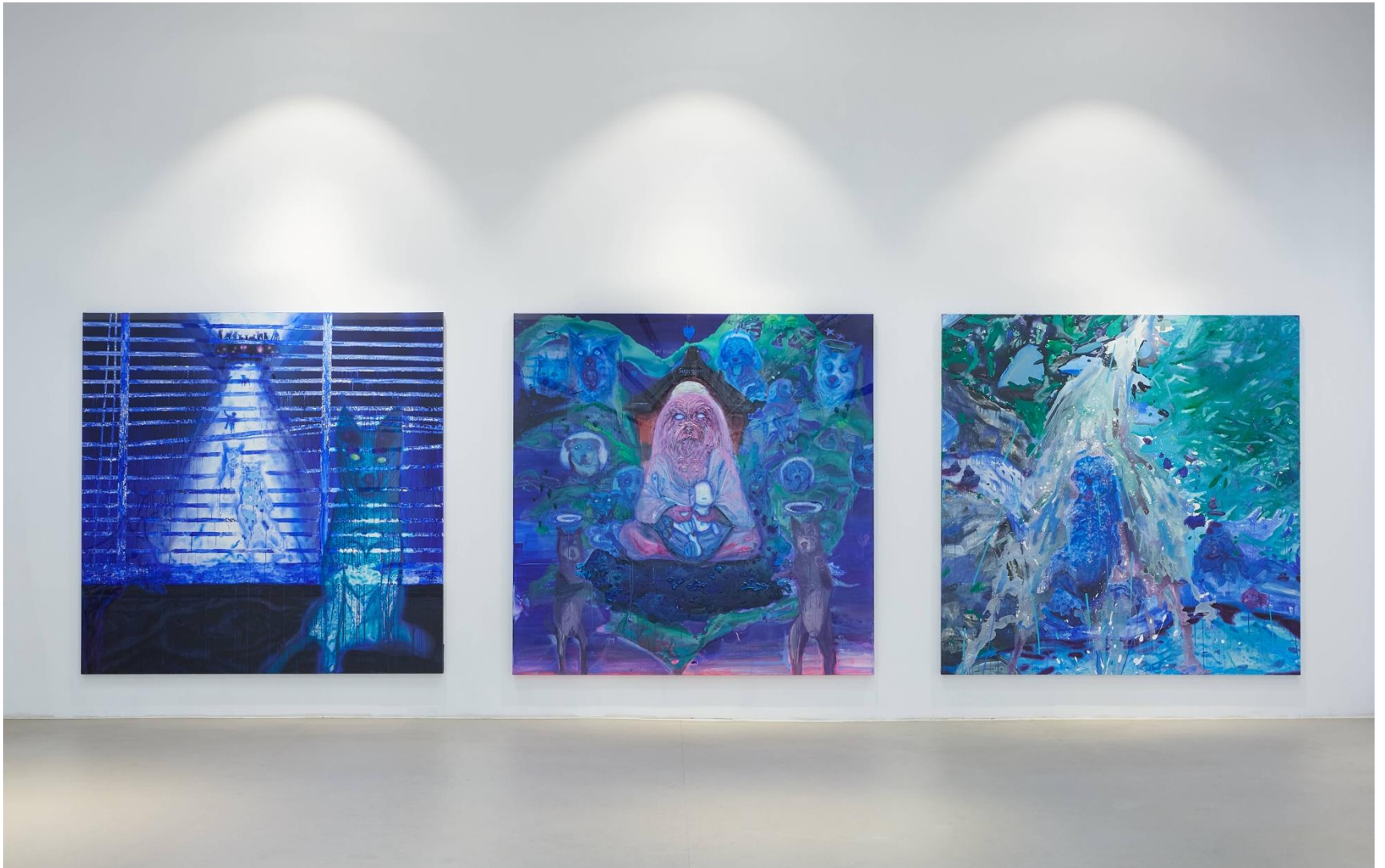


Installation views, Seounghee Lee, *"The Mind of God and Dog,"* 2021. Mulla Art Space, Seoul.

*The Great Dog 1*, 2021, acrylic, gypsum, epoxy putty, aluminum panel and various material on styrofoam, 90 x 45 x 170cm



*True Love 찐사랑*, 2021, acrylic on canvas, 200 x 200 cm



Installation views, Seunghee Lee, "*The Mind of God and Dog*," 2021. Mulla Art Space, Seoul.



*The Door Series 1 문짝 시리즈 1*, 2021, acrylic and pigment on Hanji with door.



*Dog - Bird 2 개새 2*, 2023, acrylic on resin, 14.5 x 36 x 27.5 cm



개새 집 *Dog House*, 2023, chrome on resin and wood, 60 x 60 x 150 cm