

이승희

b. 1994, 일산 거주 및 활동
leeseounghee.com / @end_of_summer

학력

2021 홍익대학교 일반대학원 동양학과 졸업
2018 런던 예술대학교, 첼시컬리지 오브 아트 순수 미술 졸업

개인전

2025 Pieces of, 상히움, 서울
2023 End of Summer, 디스위켄드룸, 서울
2021 신과 개의 마음, 문래예술공장, 서울
2021 고양 아티스트 365, 고양아람누리, 고양
2020 Blue eyes, 온수공간, 서울

단체전

2025 Velvet Hammers, 핼, 서울
2025 사이 시공 생태계, 팀서화, KCS, 서울
2024 모자만 아는 일, CALM & PUNK GALLERY, 도쿄, 일본
2024 스모킹 건, 별관, 서울
2023 미안해요, 프랑켄슈타인, 전북 도립 미술관, 완주
2023 K90 - 99, K-Art as a convergence of Multi – culture,
LUPO, 밀라노, 이탈리아

Seounghee Lee

b.1994, Lives and works in Ilсан
leeseounghee.com / @end_of_summer

Education

2021 MFA, Oriental Painting, Hongik University
2018 BFA, Fine Arts, University arts of London, Chelsea college of arts

Solo Exhibitions

2025 Pieces of, Sangheeut, Seoul
2023 End of Summer, ThisWeekendRoom, Seoul
2021 The mind of God and Dog, Mulle Art Space, Seoul
2021 Goyang Artist 365, Goyang Aram nuri, Exhibition hall, Goyang
2020 Blue eyes, Onsu-gongan, Seoul

Group Exhibitions

2025 Velvet Hamers, FIM, Seoul, KR
2025 Ecosystem of In-between space time, TEAM.SEOHWA, Seoul, KR
2024 Only the Hat Knows, CALM & PUNK GALLERY, Tokyo, Japan
2024 Smoking Gun, OUT HOUSE, Seoul, KR
2023 Sorry, Frankenstein, Jeonbuk Museum of Art, Wanju
2023 K90 - 99, K-Art as a convergence of Multi - culture, LUPO, Milano,
Italy

2023 동시대 이슈전 헬로! 펫, 또 하나의 가족,
성남 큐브 미술관, 성남

2023 비록 보이지 않더라도, 대전창작센터, 대전

2022 Image tracking, 전시공간, 서울

2022 This Title Is Not Available In Your
Region, GASP, 뉴욕, 미국

2020 Blue, 을지로 of, 서울

선정

2021 서울문화재단 비넥스트 시각예술부문 (구
유망 예술 지원)선정

2021 고양문화재단 고양우수작가 선정

소장

X Museum, 베이징, 중국

2023 Contemporary issue – Hello! pet, Our family, Cube Art Museum,
Seongnam

2023 Unseen, Daejeon creative center, Daejeon

2022 Image tracking, all time space, Seoul

2022 This Title Is Not Available In Your Region, GASP, Newyork, USA

2020 Blue, Euljiro – of, Seoul

Awards & Grants

2021 BENXT—Visual Art, Seoul Cultural Foundation, Mullae Art Space

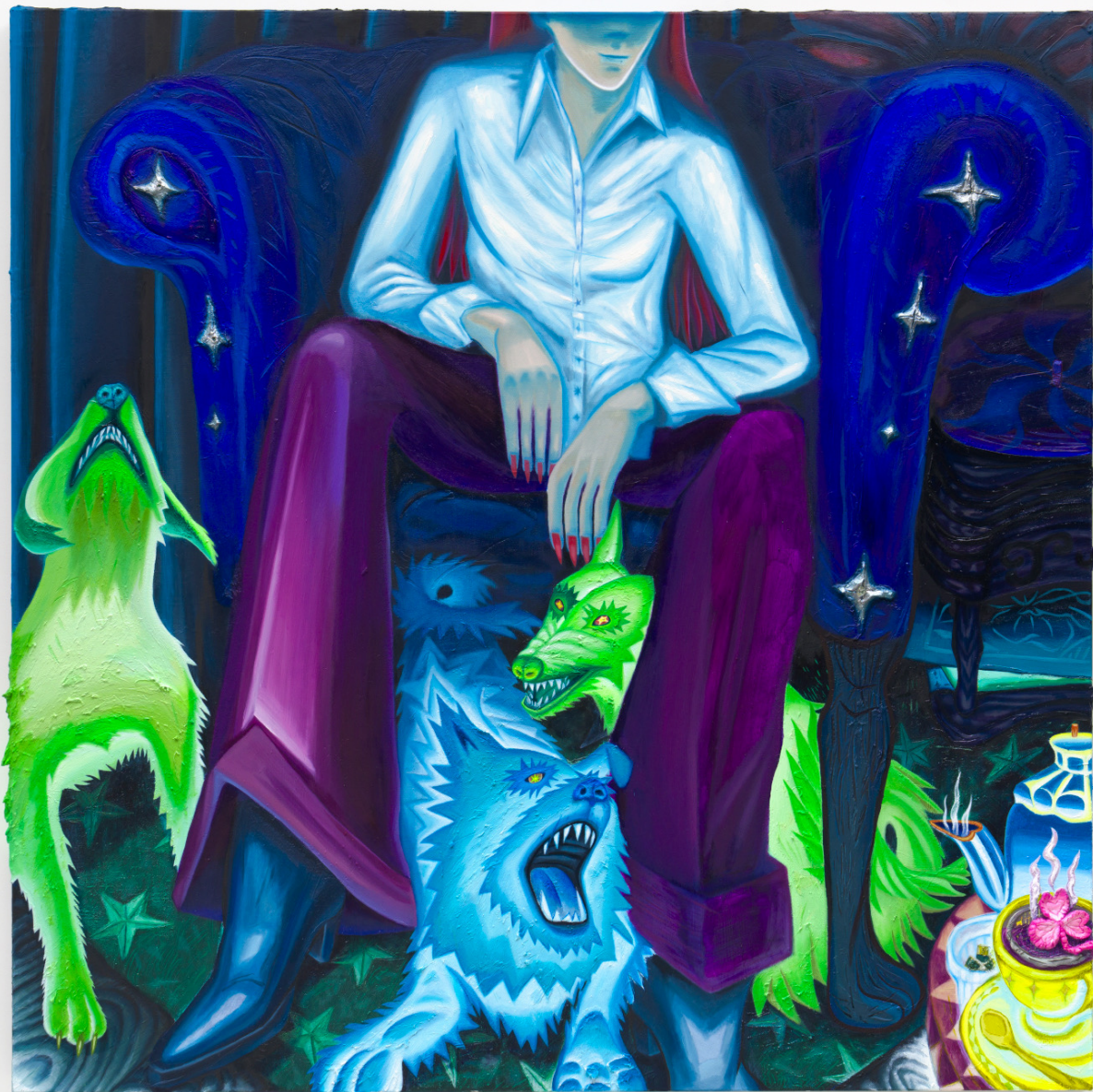
2021 Goyang Artist 365, Goyang Cultural Foundation

Public Collections

X Museum, Beijing, CN



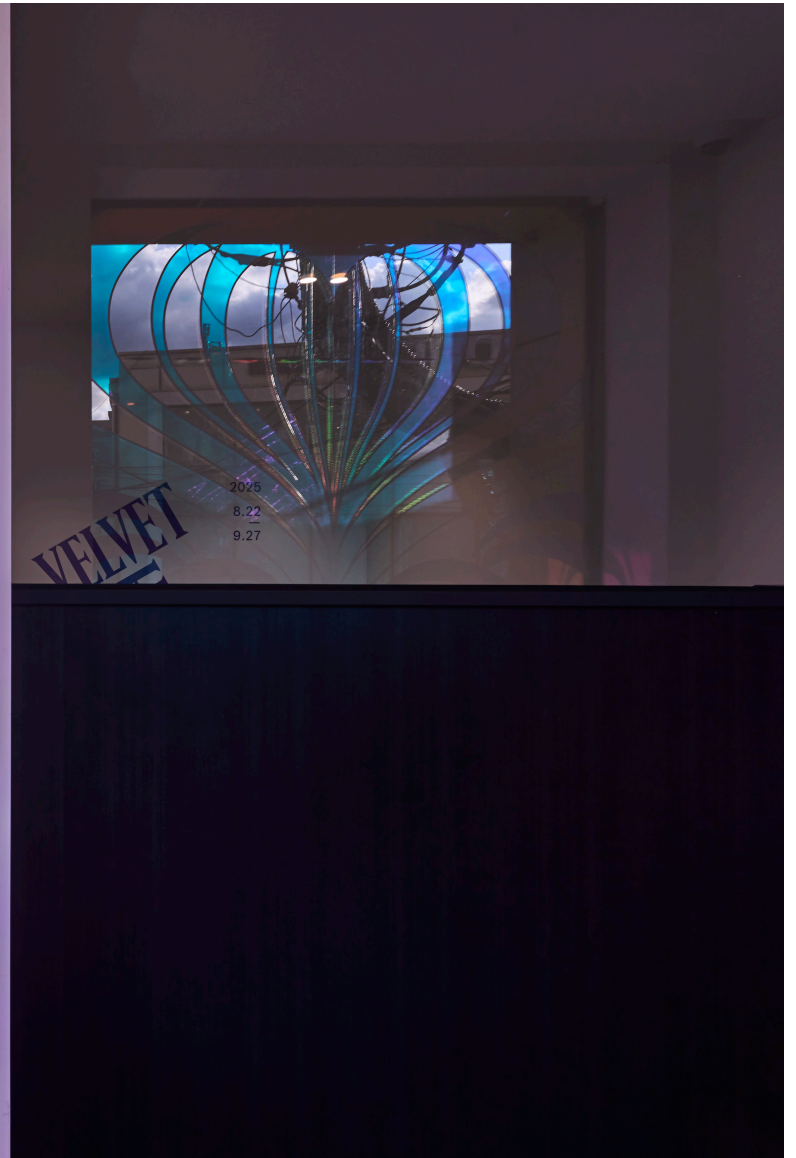
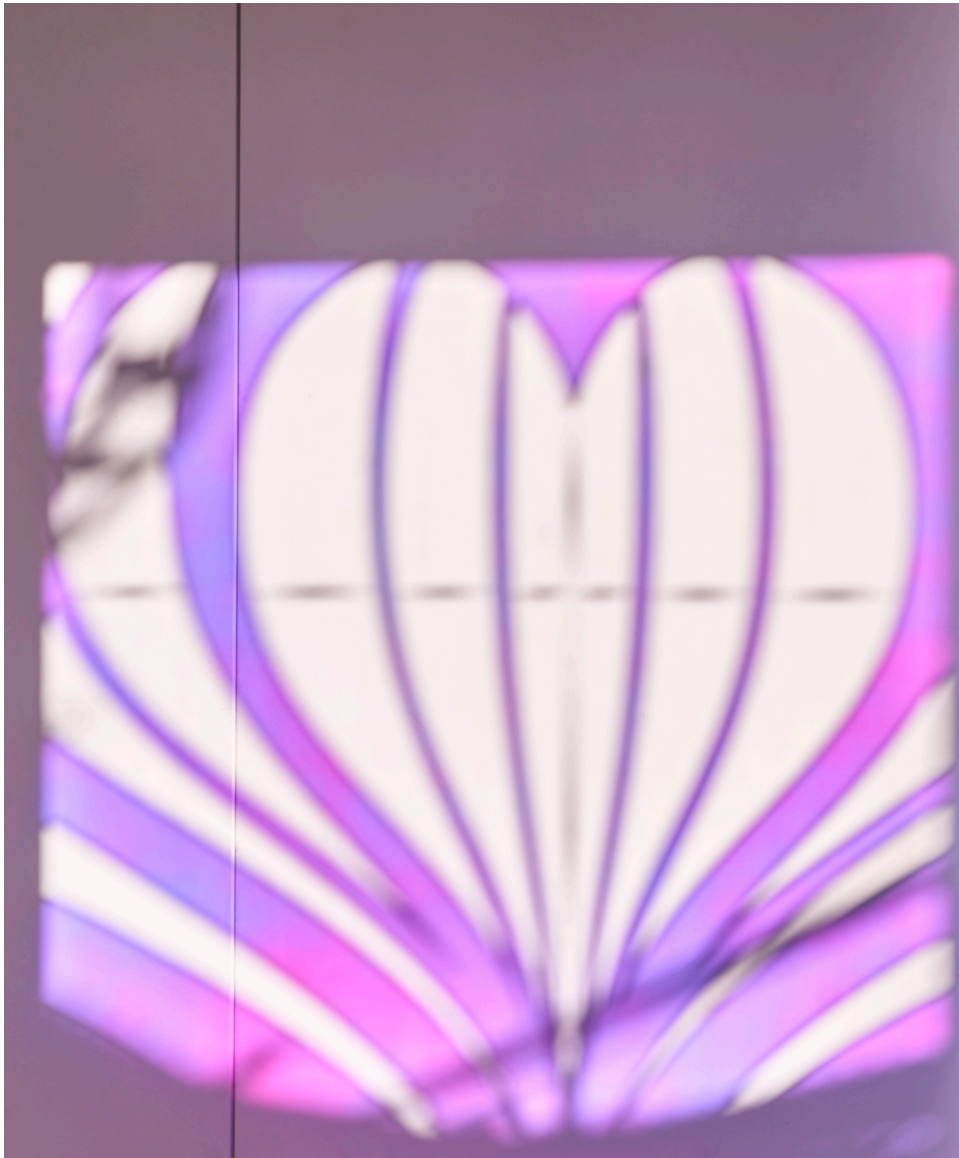
Installation views, Seounghee Lee, "*Velvet Hammers*," 2025. Fim, Seoul.



She and She, 2025, oil and acrylic on canvas, 130 x 130 cm



Wiggle-Wag Window, The Wagging Tail Spell, 사랑 사랑 꼬리 주문, (Guardian Window Series), Graphic Design : Jeongmo Park



Installation views, Seounghee Lee, "*Velvet Hammers*," 2025. Fim, Seoul.





The Magician (Tarot Card Series), 2025, acrylic on canvas, 73 x 60 cm

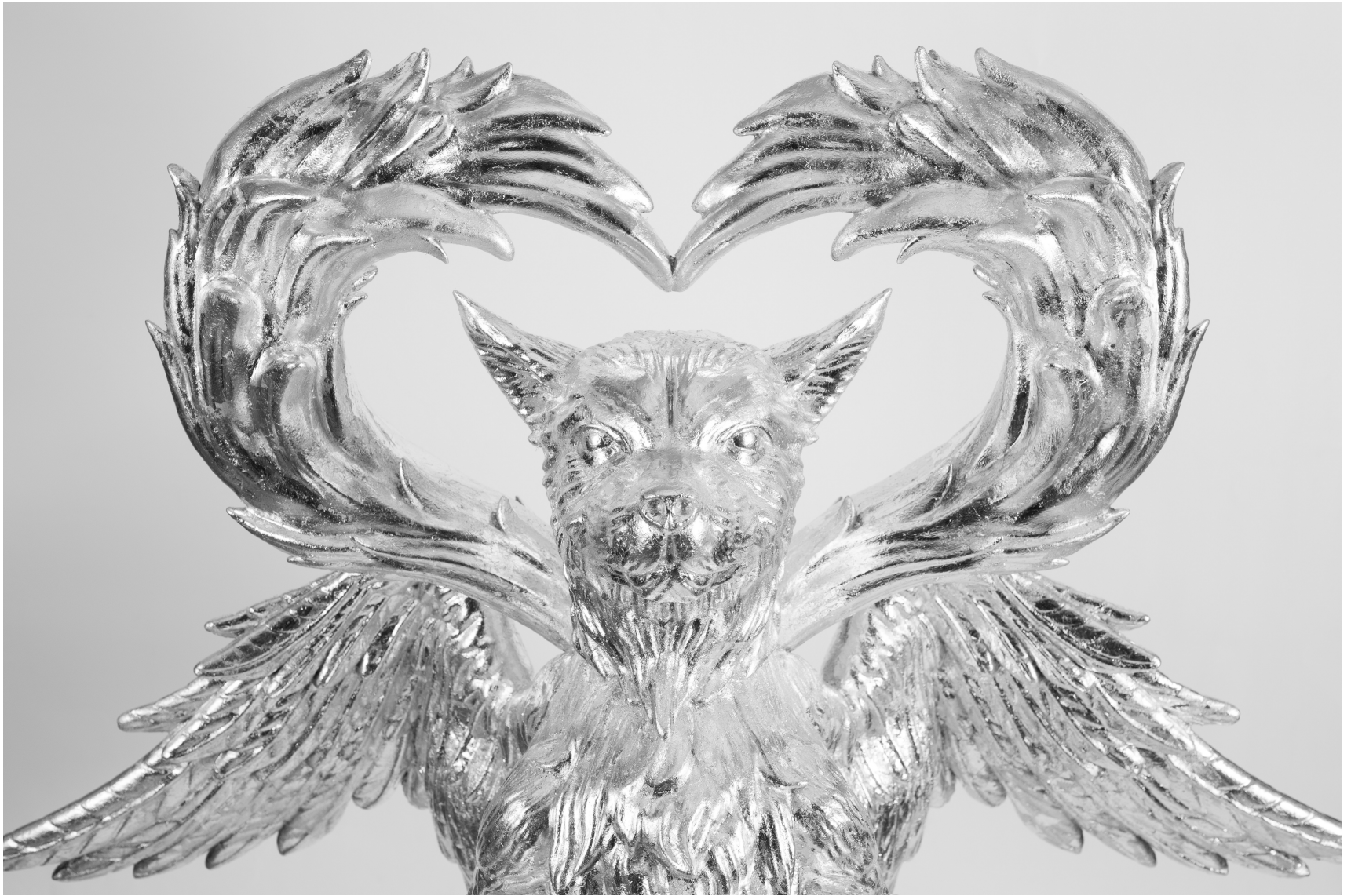




Liae's Desk, 2025, oil and acrylic on canvas, 73 x 60 cm



The Royal Guardian. (Brass. Ver), 2025, Etching on copper plate, ink on paper, hand-cast resin frame with brass powder and wax finish, and anti-reflective museum glass, 73 x 60 cm



The Eternal Key, 2025, aluminum leaf on resin, 105 x 50 x 160 (h) cm



Installation views, Seounghee Lee, "*Pieces of*," 2025. sangheeut, Seoul.



Doggie Coin 2 (The Beginning of the World), 2025, patinated bronze with wax finish. 30 x 3 x 30 (h) cm.



Doggie Coin 3 (Forever), 2025, patinated bronze with wax finish. 30 x 3 x 30 (h) cm.



Doggie Coin 2 (The Beginning of the World), 2025, patinated bronze with wax finish. 30 x 3 x 30 (h) cm.





In Some Dream, 2025, etching on copper plate, printed with ink on paper, framed with resin, chrome powder, and wax finish









The Series of Tools for Spiritual Practice (Live Right), 2025, bronze with wax polish and ink, 15 x 5 x 5 (h) cm



The Series of Tools for Spiritual Practice (Amor Fati), 2025, bronze with wax polish and ink, 14 x 5 x 5 (h) cm





Installation views, Seounghee Lee, *"Alter Being: Only the Hat Knows,"* 2025. Calm & Punk, Tyoko.





G5, 2024, acylic on canvas, 80 x 80 cm







나뭇가지위에 개새 (*Dog Bird on Branch*), 2024, acrylic epoxy on resin, 19 x 24 x 40cm(h)



Installation views, Seounghee Lee & Sunju Ham, "*Smoking Gun*" 2024. outhouse, Seoul.



Face (Talisman series), 2024, acylic and epoxy putty on canvas, 75 x 93 cm





End of Summer, 2023, acrylic, acrylic medium, water based marker and pigment powder on canvas, 210 x 120, 210 x 240, 210 x 120 cm (From left)







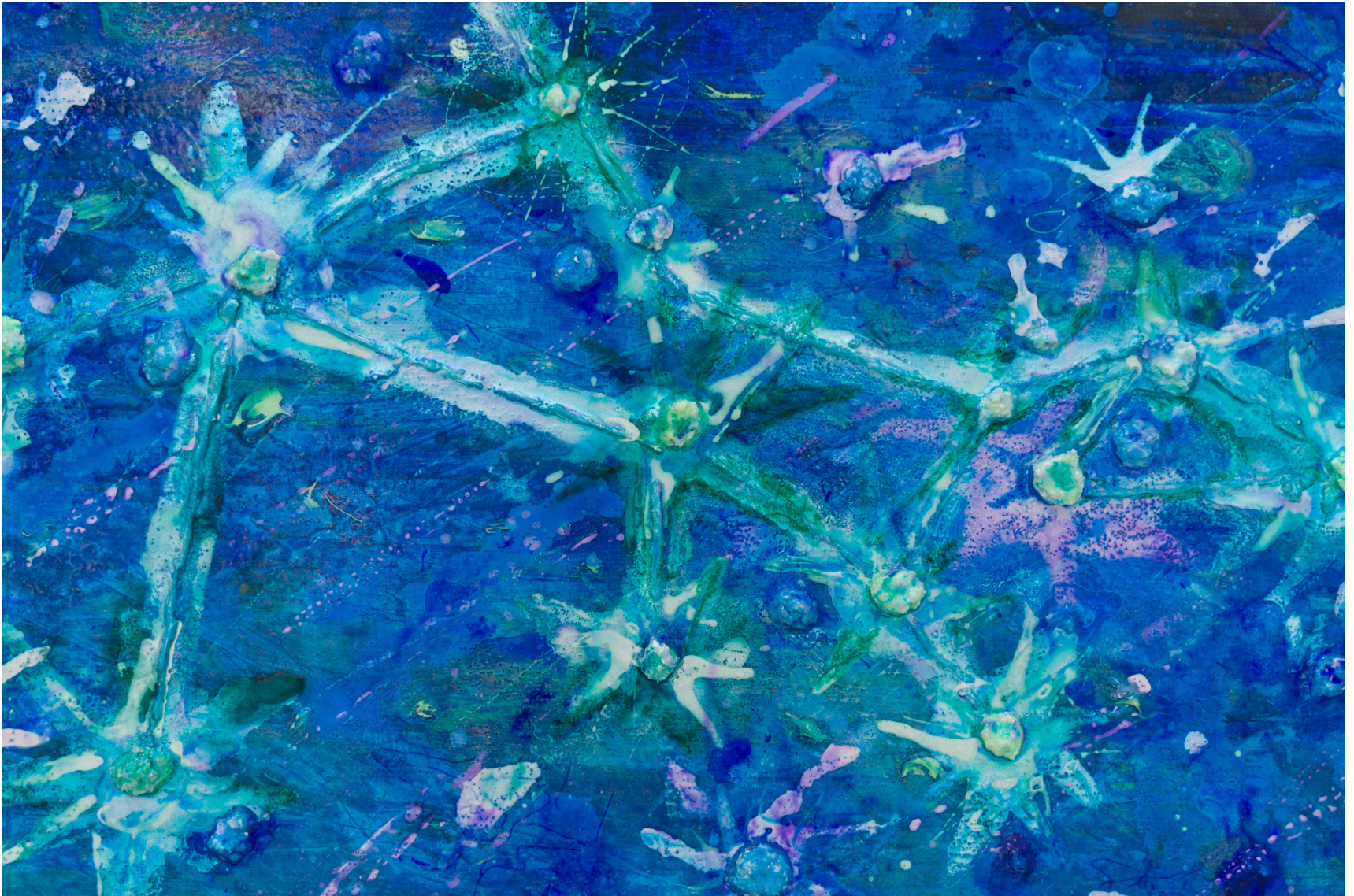




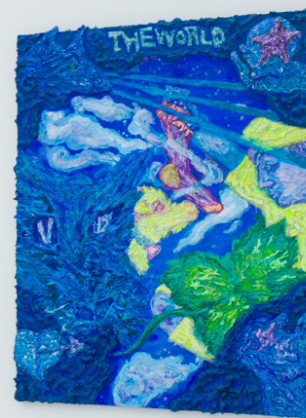
Installation views, Seounghee Lee, "*End of Summer*," 2023. This Weeknd Room, Seoul.

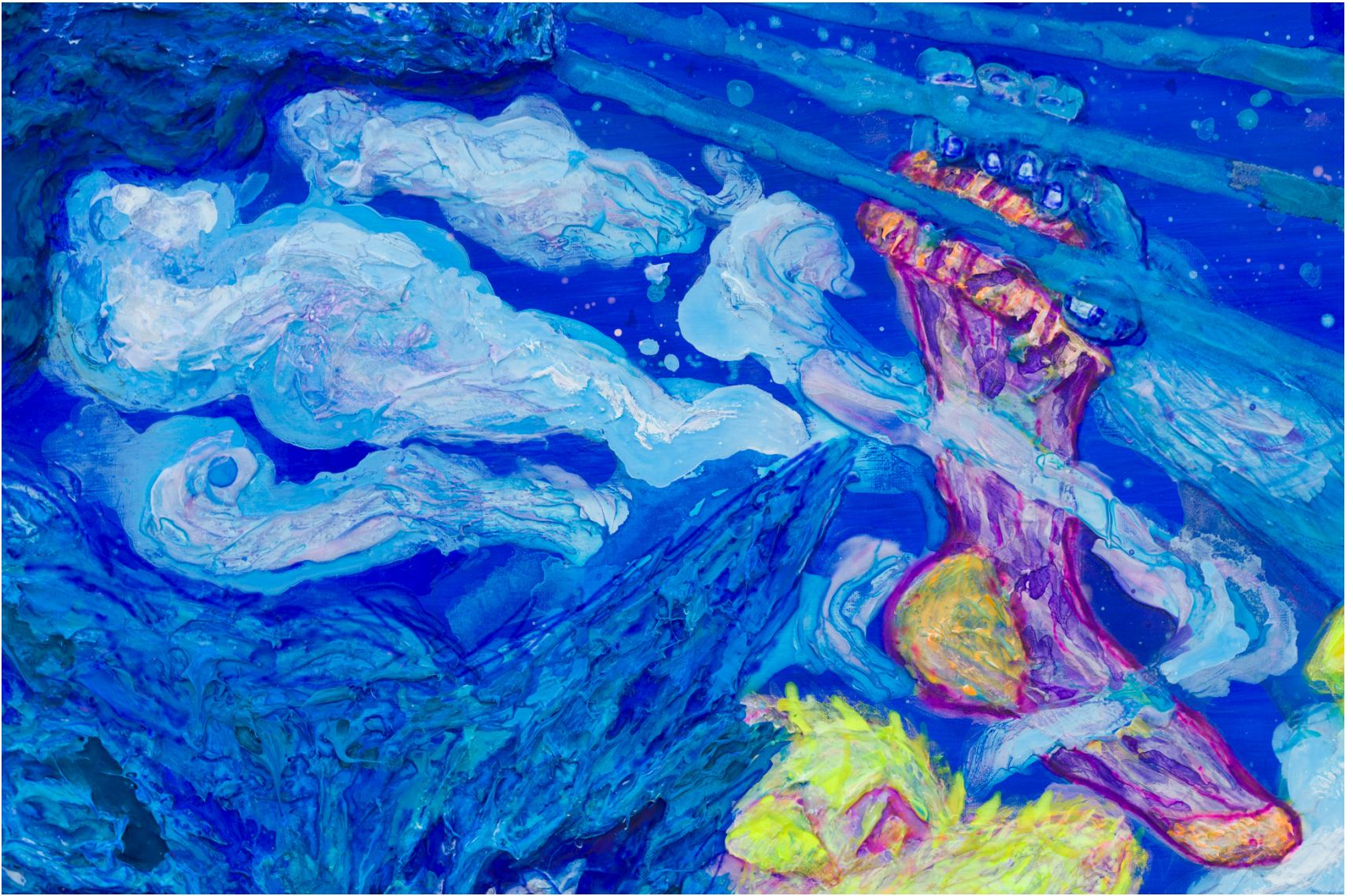


Supreme, 2023, acrylic, acrylic medium, water based marker and pigment powder on canvas, 91 x 72 cm



* Dog star (Sirius, Orion's Dog)













야광 개구리 Dogrog(Fluorescent), 2023, phosphorescent pigments and epoxy on resin



The Series of Energetic Dosa, acrylic on resin, 2023



The Great Dog 2, 2021, acrylic, gypsum, epoxy putty, aluminum panel and various material on styrofoam, 150 x 90 x 170cm



Installation views, Seounghee Lee, "*The Mind of God and Dog*," 2021. Mulla Art Space, Seoul.

The Great Dog 1, 2021, acrylic, gypsum, epoxy putty, aluminum panel and various material on styrofoam, 90 x 45 x 170cm



True Love 진사랑, 2021, acrylic on canvas, 200 x 200 cm



Installation views, Seounghee Lee, "*The Mind of God and Dog*," 2021. Mulla Art Space, Seoul.



The Door Series 1 문짝 시리즈 1, 2021, acrylic and pigment on Hanji with door.



Dog - Bird 2 개새 2, 2023, acrylic on resin, 14.5 x 36 x 27.5 cm



개새 집 *Dog House*, 2023, chrome on resin and wood, 60 x 60 x 150 cm